

## GUIDE TO SPIRITLINK 2.0

SpiritLink 2.0 is a tool that allows for the transfer of databases, label layouts, and graphic images between your computer and your Spirit™2100 portable printing system. This tool has many uses. For example, label data that is already in a database (such as Excel, Access, and other Windows compatible databases) can be uploaded to the Spirit printer as a batch file and printed on demand in the field, eliminating redundant data entry, reducing data entry errors, and speeding label production. Also, the Spirit printer automatically keeps track of every different label that is printed in a database file, and this file can be uploaded to a PC to keep an accurate record of labels printed. Finally, SpiritLink 2.0 makes it simple to create label designs in one printer and store them on your PC for later use or distribute them to other Spirit™2100 systems throughout your workforce. Graphic images can be kept on one PC and then transferred to other printers depending on specific job needs.



## ESTABLISHING COMMUNICATIONS

Connect the Spirit Communications Cable (part no. 2100CABLE) to the COM1 or COM2 port on the back of your computer and the RJ12 (phone plug) connector to the port located at the lower, left-hand edge of the unit. Turn on the power to the Spirit™2100, and press the MENU button followed by the SoftKey button PCLINK. The unit will now show a text display in which it says that the printer is "Waiting To Link" to the SpiritLink software on your computer. Click on the SpiritLINK icon on your computer to open the software.



## TROUBLESHOOTING

If you experience an error while trying to communicate with the Spirit™2100, check to be sure that the printer is on and in PCLINK mode, the cables are connected properly and that the correct COM port is checked on-screen.



## MANAGING YOUR LABEL DESIGNS

From the SpiritLINK main menu, click on the Manage Designs button to begin working with your label designs. Be sure the Spirit™2100 is "Waiting To Link" before proceeding with any communication between computer and printer (see "Troubleshooting" above).



Click on the Get Layout Design File button to view a list of saved layout designs on your computer's hard drive. The default directory (unless you chose another during installation) on your hard drive will be **C:\Program Files\HellermannTyton\Spirit\_2100\data**. The file you select will then be listed in the "Manage Layout Designs" window.

After choosing a layout design from your computer click the Store Layout Design To Printer button. The data transfer can be monitored on the status bar below and on the display screen of the Spirit™2100. Once completed, a *copy* of the layout design is stored in the the Spirit™2100 and is available for any printing project.

To view all layout designs stored in the memory of the Spirit™2100, press the Read Layout Designs From Printer button. They will be listed in the "Layout Designs In Printer" field.

To upload a layout design from the Spirit™2100 to your hard drive, select the file from the directory window and press the Save Label Design To File button.

To remove a layout design from the Spirit™2100 only, select the design from the “Layout Designs In Printer” field and press the Delete Selected Design button. **CAUTION:** If you have not saved this file to your computer first, once removed from the printer, it will be permanently gone.

To delete all the layout design files in the Spirit™2100 at once, press the Delete All Layouts button. **CAUTION:** Save these files to your hard drive first or else they will be permanently deleted.

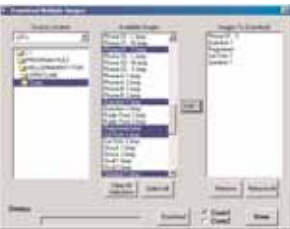
## MANAGING GRAPHIC IMAGES

From the main menu, click on the Manage Images button to begin working with graphic images. Be sure the Spirit™2100 is “Waiting to Link” before proceeding with any file management between computer and printer.



Click on the Get New Image button to view a list of images on your hard drive or floppy disk. The default directory on your hard drive (unless you chose another during installation) will be **C:\Program Files\HellermannTyton\Spirit\_2100\data**. The image you select will be listed in the Image Name field and the preview window to the right.

After selecting an image file from your computer, click the Store New Image In Printer button. The data transfer can be monitored on the status bar below and on the display screen of the Spirit™2100. Once completed, a copy of the image file will be stored in the memory of the Spirit™2100 and is available for any printing project.



To select multiple images from your computer to upload at once, click the Store Multiple Images In Printer button. Select the location of the images on your hard drive and the specific images in that location in the Available Images field. Click the Add-> button to copy them over to the Images To Download file and click the Download button. The data transfer can be monitored on the status bar below and on the display screen of the Spirit™2100. Once completed, a copy of the image files will be stored in the memory of the Spirit™2100 and are available for any printing project.

To view all images stored in the memory of the Spirit™2100, press Read Images In Printer.

To remove an image that's stored in the Spirit™2100, read the images in the printer, select the design from the directory window and press the Delete Selected Image button. **CAUTION:** If you do not have a copy of this file on your hard drive first, once removed from the printer, it will be permanently deleted.

To clear all the images in the Spirit™2100 at once, press the Delete All Images button. **CAUTION:** If you do not have copies of these files on your hard drive first, they will be permanently deleted.



lines are entered, an error will appear on the printer. Each label with an error will have text printed stating that an error occurred and the label was skipped.

Move: Adjusts the position of the text on the label. Press up to move selected line of text up one row, press down to move it down one row.

Add: Press this button to add another label, which will appear ABOVE the selected label.

**Selected Label**

Edit

Add

Delete

**Label Limits**

Label Width

0.300"

Check

Clear Flags

**Font Size**

Automatic

Big

Medium

Small

**Justification**

Left

Center

Right

**Style**

Regular

Bold

Cancel Done

Delete: Press this button to delete the selected label.

Label Width: Change the width of the label. Predetermined settings of 0.300", 0.500", 0.625", 0.750", 0.800", 0.900", 1.00", 1.250", 1.500", 1.750", 1.875", 1.90", and 2.00". Select the width of your label and it will appear in blue.

Check: Select the label width and press this button. Labels with too many characters for the selected width will appear in red. A message will appear stating that one or more label lines is too long for the specified label width. The labels in red will need a wider label stock, or less characters and the red error will clear. If no width is selected, the following message will pop up: 'Please scroll to the desired label width and then click on it to select it.'

Clear Flags: This will clear the labels that are in red.

Font Size: Select which font size you want on the label. The "automatic" option will select the largest size based on the label size and the amount of characters in the table.

Justification: Select how the text will align on the label.

Style: Select if you want the text Regular or Bold.

## DOWNLOAD BATCH JOB TO PRINTER

When ready to import data to your printer, click the [Download Batch Job to Printer](#) button. Be sure the Spirit 2100 is "Waiting to Link" before proceeding with any file management between your computer and the Spirit printer (see Establishing Communications on page 16).

To view all batch jobs stored in the memory of your Spirit 2100, press the [Read Batch Jobs From Printer](#) button. The stored batch jobs will be listed in the Batch Jobs in Printer field.

To remove a batch job from the Spirit 2100 only, select the batch job from the Batch Print Jobs In Printer field and press the [Delete Selected Batch Print Job](#) button. **CAUTION: If you have not saved these files to your computer first, once removed from the printer it cannot be restored.**

**Batch Label Edit**

Label

Move

Cancel Done

To delete all the batch jobs from the Spirit 2100 at once, press the Delete All Batch Print Jobs button. **CAUTION:** If you have not saved these files to your computer first, once removed from the printer they cannot be restored.

The default directory on your hard drive (unless you chose a customized directory installation) will be **C:\ProgramFiles\HellermannTyton\Spirit\_2100\data**.

To upload a saved batch job to your Spirit 2100, click the Download Current Batch Job To Printer button. The data transfer can be monitored on the status bar below and on the display screen of the Spirit 2100. Once completed, a copy of the batch job is stored in the Spirit 2100 and is now available for printing.



To retrieve a batch job that has been transferred to the printer, follow these steps:

1. From the Main Menu, press the Label softkey.
2. Press the Arrow softkey, and then press it a second time.
3. Press the BATCH softkey.
4. Press the SELECT softkey.
5. Select the batch job you want to print and press DONE. Then, press the START softkey to print the job.

If the Spirit 2100 runs out of labels while running a batch job, it will hold and ask if you wish to quit the job or resume printing. If you choose to resume, the Spirit will figuratively back up a number of labels and resume. Since it is not possible for the Spirit to know exactly which label was the last to print, it calculates a number of labels to reprint based on a fixed length, in inches. The Spirit calculates how many labels equates to this distance and re-prints that many labels. The re-print length is set at 8 inches.

The maximum number of printed characters for the total batch job is approximately 5100 characters. So, if you average 3 lines in each label and 12 characters in each line, then about 140 labels could be printed in that batch job.

It is possible to print a very large batch job by splitting it into multiple jobs. With no images stored, the Spirit can store from 12 to 38 batch jobs, depending on the size.

LABEL WIDTH	MAXIMUM CHARACTERS
.3"	3
.5"	7
.625"	9
.75"	11
.8"	11
.9"	12
1.0"	13
1.25"	13
1.5"	16
1.75"	16
1.875"	16
1.90"	16
2.0"	17

## EDIT LOGGING

When ready to import data to your printer, click the [Edit Logging](#) button. Be sure the Spirit 2100 is "Waiting to Link" before proceeding with any file management between your computer and the Spirit printer (see Establishing Communications on page 16.)

To view the status of your edit logging, click the [Get Edit Log Status](#) button. The Edit Log Status field will display Edit Logging Enabled:



Logging Enabled:  
Yes/No, the number of Edit Logs Recorded and amount of Log Memory Used.

To enable printer edit logging, press the [Enable Printer Edit Logging](#) button. This will allow the printer to track what information is being printed on the labels. An "E" will appear in the softkey menu when in Edit Log mode.



To disable printer edit logging, press the [Disable Printer Edit Logging](#) button. The printer will no longer track what information is printed on the labels.

To clear the Spirit's edit log, press the [Clear Printer Edit Log](#) button. **CAUTION:** If you have not saved these files to your computer first, once removed from the printer it cannot be restored.

To read the edit log from the printer, press the [Read Edit Log From Printer](#) button. The information will appear in the Edit Log field. Commas are represented by an underscore.

Example: This edit log would be a record of the three following labels. Label 1: "SPIRIT 2100" on the first line, "PRINTER" on line two, and "HELLERMANNTYTON" on line three. Label 2: "DATA" on the first line, "LINE" on the second line, and "ONE" on line three. Label 3: "DATA" on line one, "LINE" on the second line, and a data image on line three.

To save the edit log, press the [Save Read Log to File](#) button. The default directory on your hard drive (unless you chose a customized directory installation) will be **C:\ProgramFiles\HellermannTyton\Spirit\_2100\data**.



It is possible to store 200 log entries. After the log becomes full, the oldest entries will be overwritten, as needed, to make room for new entries.

The data transfer can be monitored on the status bar and on the display screen of the Spirit 2100.

## TECHNICAL SUPPORT

Call the Identification Support Center at 800-537-1512 ext. 380 or e-mail [tagprint@htamericas.com](mailto:tagprint@htamericas.com).